

Environmental Demography



CU Population Center
UNIVERSITY OF COLORADO BOULDER

CUPC Day 2021

The complex interactions between population and the environment

- *Population, Natural Resources & Social Institutions*
- *Population Dynamics and Environmental Hazards*
- *Sociodemographic Variation in Environmental Perceptions*
- *Data Innovations and data integration*
- *Methods Advancement*



Environmental Demography



CU Population Center
UNIVERSITY OF COLORADO **BOULDER**

CUPC Day 2021

Faculty Affiliates working in the ED arena

Amanda Carrico

Colleen Reid

Fernando Riosmena

Jani Little

Lori Hunter

Lori Peek

Mara Goldman

Myron Gutmann

Scott Ortman

Seth Spielman

Stefan Leyk

Taylor Jaworski

Terrence McCabe

Joel Hartter

Karen Bailey

Morteza Karimzadeh

Krister Andersson



University of Colorado
Denver



University of Colorado
Anschutz Medical Campus



CU Population Center
UNIVERSITY OF COLORADO **BOULDER**

IBS HOME



HOME PEOPLE NEWS EVENTS RESEARCH TRAINING SERVICES AND RESOURCES CONTACT



Environmental Demography

CUPC Day 2021

Population, Natural Resources, and Social Institutions

- Sustainability
- How do social institutions mediate human reactions to environmental change
- Social and environmental justice



WELS GROUP



Environmental Demography

CUPC Day 2021

Population Dynamics and Environmental Hazards

- How do interactions between social, natural, and technological systems produce environmental hazards?
- Examine the associations between demographic processes and both natural and human-made environmental hazards



Environmental Demography



CU Population Center
UNIVERSITY OF COLORADO BOULDER

CUPC Day 2021

Sociodemographic Variation in Environmental Perceptions

- Although public environmental awareness and concern has increased over the past decades, there is demographic variation
- Research examines the ways in which social and demographic factors help understand variation in environmental perceptions



Environmental Demography

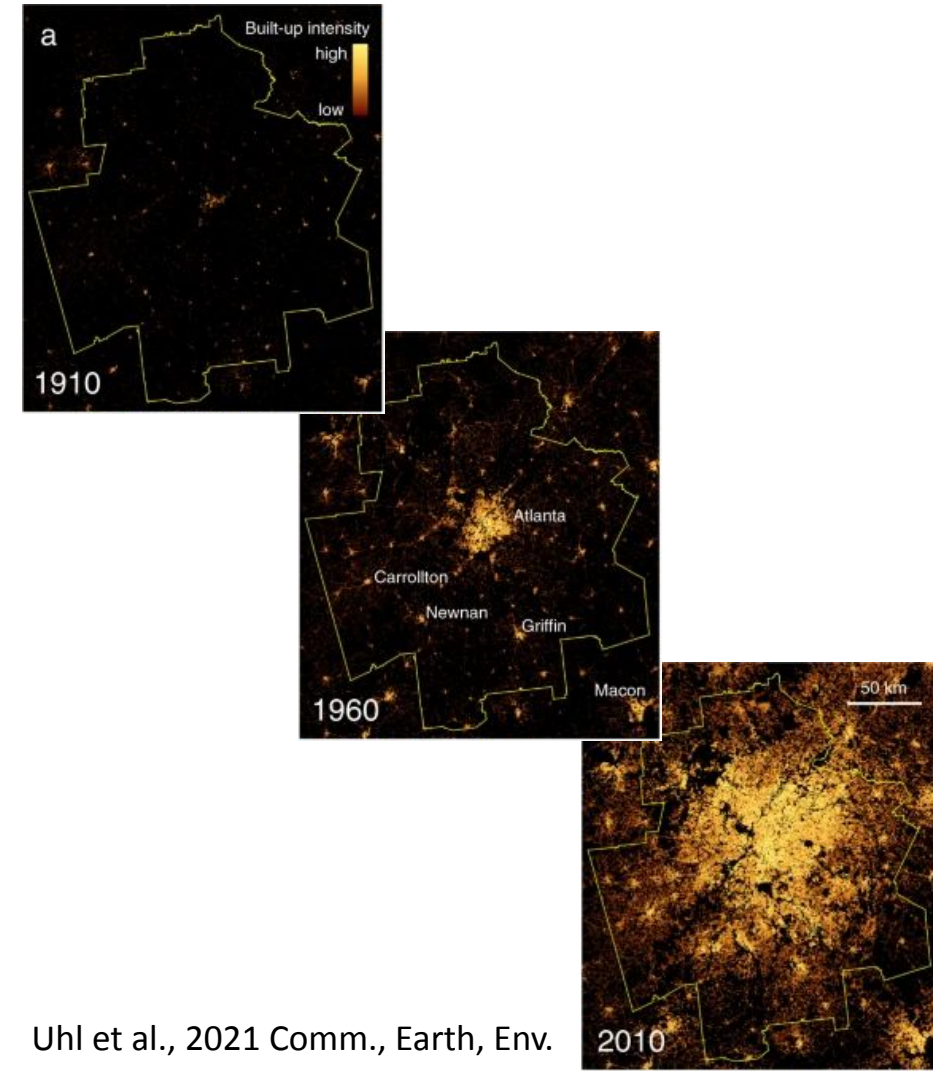


CU Population Center
UNIVERSITY OF COLORADO **BOULDER**

CUPC Day 2021

Leveraging Data Innovations to Model Changes in human and environmental systems

- Historical Settlement Data Compilation of the U.S. (HISDAC-US)
- Rurality at fine scale over time
- Historical population data
- Center for Collaborative Synthesis in Archaeology
- Historical maps and remote sensing data



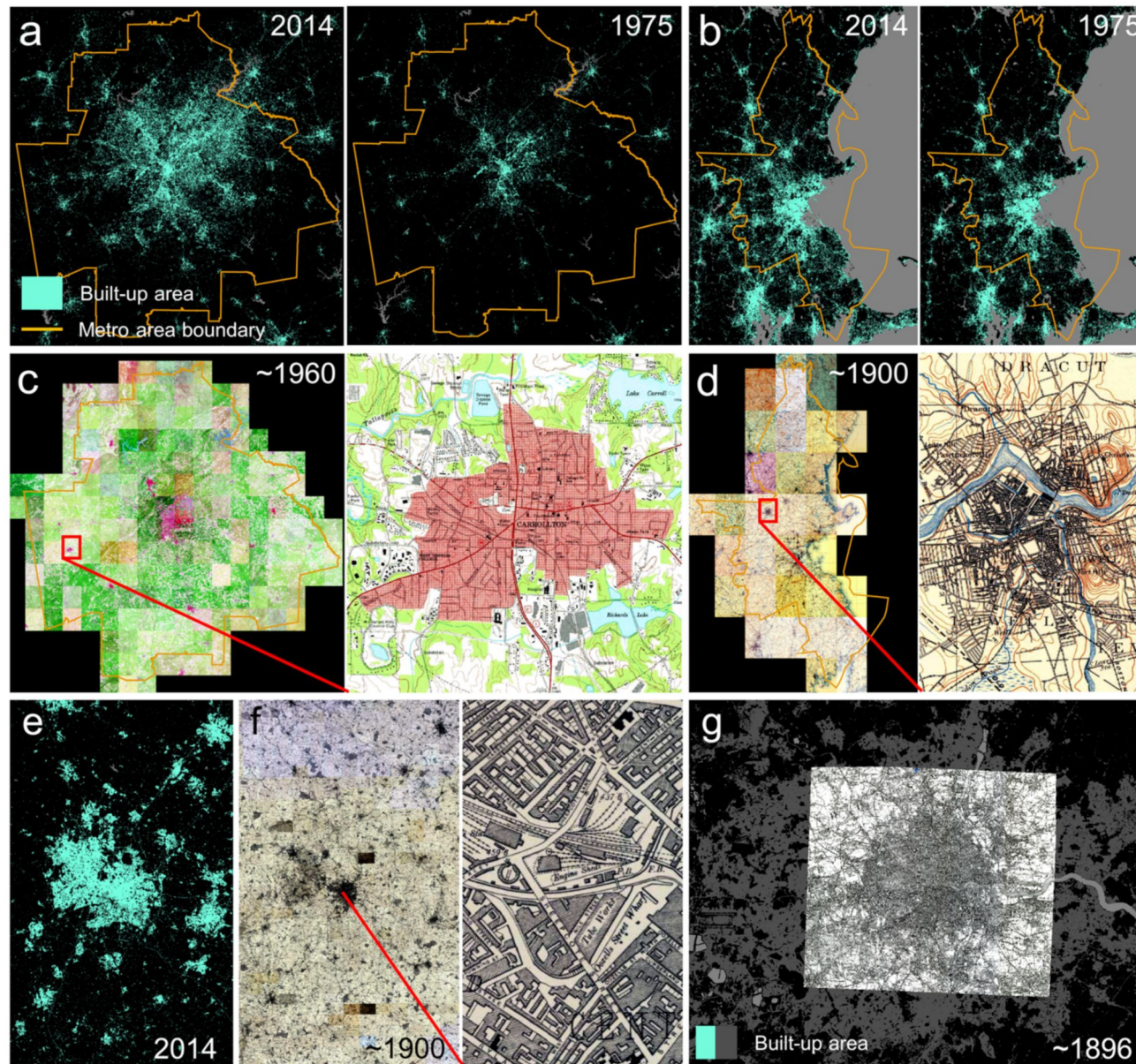
Uhl et al., 2021 Comm., Earth, Env.

Environmental Demography



CU Population Center
UNIVERSITY OF COLORADO **BOULDER**

CUPC Day 2021



Uhl et al., 2021 Remote Sens.

Environmental Demography

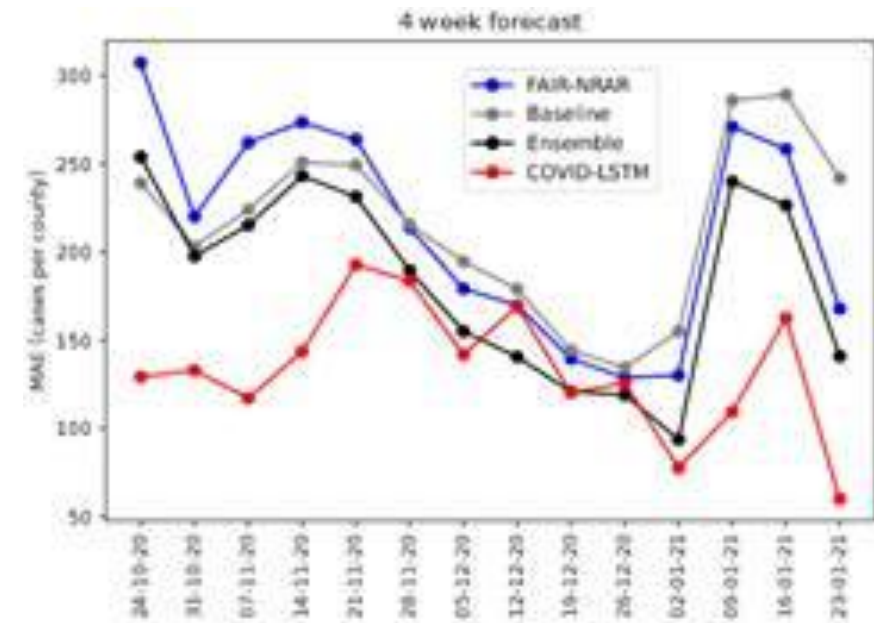


CU Population Center
UNIVERSITY OF COLORADO BOULDER

CUPC Day 2021

Methodological Advancements in CUPC overlapping research efforts

- Mixed, statistical, spatial and spatio-temporal methods:
 - Population projections
 - Exposure modeling
 - COVID-data analysis and demographic factors related to trends



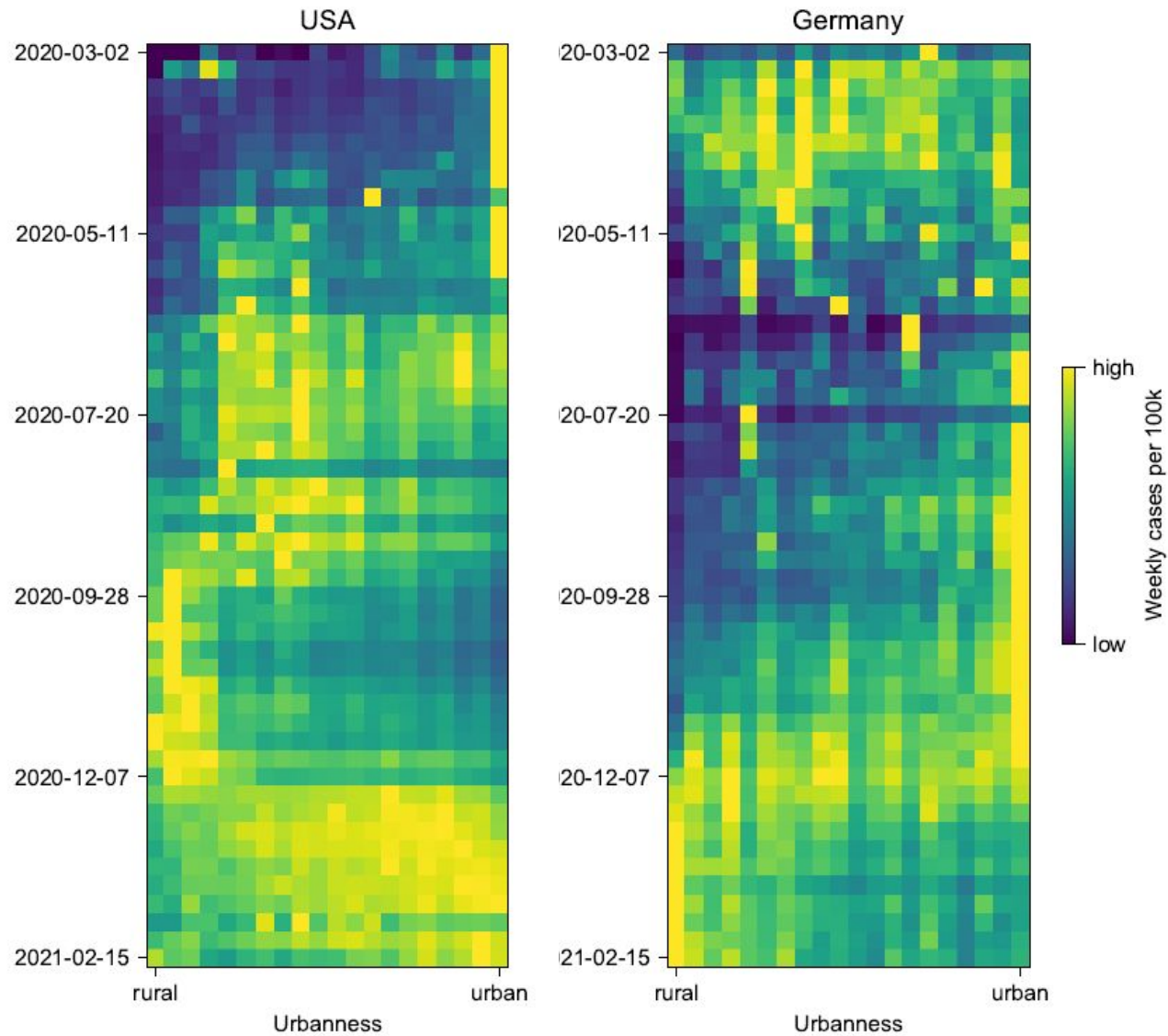
Karimzadeh et al.

Environmental Demography



CU Population Center
UNIVERSITY OF COLORADO **BOULDER**

CUPC Day 2021



COVID-19 infection rates over
time and across the
rural-urban continuum in
Germany and the US

Uhl et al., 2021

Environmental Demography



CU Population Center
UNIVERSITY OF COLORADO BOULDER

CUPC Day 2021

9:15-9:20 **Stefan Leyk** (Geography), Intro

9:20-9:25 **Scott Ortman** (Anthropology)

*“The Role of Archaeology for Climate
Change Adaptation”*

9:25-9:30 **Catherine Talbot** (Sociology)

“Introducing the ‘Tiny Town’ Project”

9:30-9:35 Short Q&A

